

# Finishing folder

2024

Mesh

 Gollinucci  
Daniele

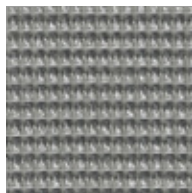
REXSITT

## YOUNIQUE MESH FIRE RETARDANT



Composizione - Composition  
 100% Polyester FR  
 Peso (g/ml) – Weight (g/lm) approx. 420  
 Abrasion résistance  
 Martindale (load 12 Kpa)  
 DIN EN ISO 12947-2: 2017  
 20.000 cycles  
 Flammability  
 D-DIN 4102 B1  
 DIN EN 1021: 2014 part 1 (cigarette test) and part 2  
 (butane flame test) when tested with non flame

retardant foam B3 density 23 Kg/m<sup>3</sup> minimum  
 ignitability classification of the upholstery  
 composite  
 according to DIN 66084 P-b  
 I - UNI 8456 (1987); UNI 9174 (1987) -  
 UNI 9174/A1 (1966) according to DM 26.6.1984  
 and 3.9.2001 Class 1 (UNO)  
 Fastness to light  
 DIN EN ISO 105-B02: 2014 / 5  
 Fastness to dry cleaning  
 DIN EN ISO 105-D01: 2010 / 4-5



KIG20



KIG10

## YOUNIQUE MESH



Composizione - Composition  
 70% Polyester 30% Polyamid  
 Peso (g/ml) – Weight (g/lm) 450  
 Abrasion résistance  
 UNI EN ISO 5470-2 / 170.000 cycles Martindale  
 Flammability  
 D-DIN EN 1021:2014 part1 ( cigarette test) /  
 when tested with non flameretardant

foam B3 density 23Kg/m<sup>3</sup> minimum ignitability  
 classification of the upholstery composite  
 according to DIN 66084 P-C  
 Fastness to light  
 DIN EN ISO 105-B02: 2014 / 6-7  
 Fastness to dry cleaning  
 DIN EN ISO 105-D01: 2010



K33



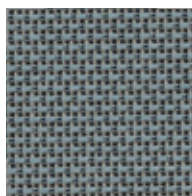
K29



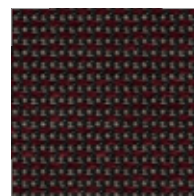
K13



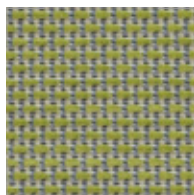
K10



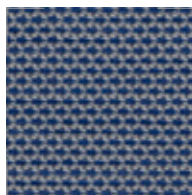
K71



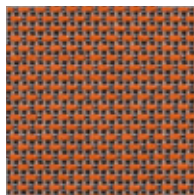
K610



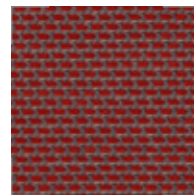
K93



K714



K68



K612

# RUNNER



Composizione - Composition  
100% Polyester  
Peso (g/ml) - Weight (g/lm) 510  
Resistenza all'abrasione (cicli)  
Abrasion résistance (rubs)  
EN ISO 12947 : 2000

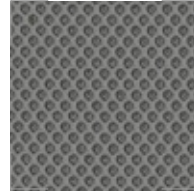
70.000 cycles Martindale  
Reazione al fuoco - Flammability  
Solidità colori alla luce  
Colour fastness to light (Xenotest)  
Blue scale UNI EN 105-B02 5/7



RR61



RR65



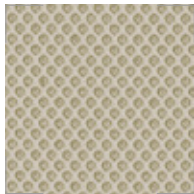
RR11



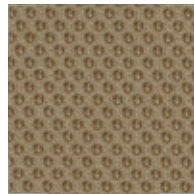
RR25



RR99



RR28



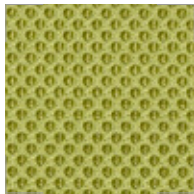
RR10



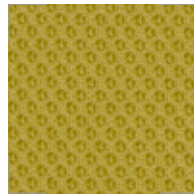
RR64



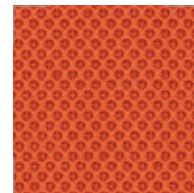
RR23



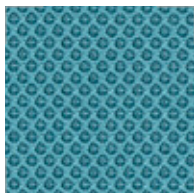
RR56



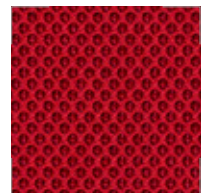
RR08



RR34



RR63



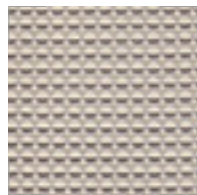
RR89

**TAGO**



Composizione - Composition  
100% polypropylene F.R  
Peso (g/ml) - Weight (g/lm) 539  
Light fastness ISO 105-B02 / : 4  
Fastness to rubbing ISO 105-X12 ( 4/4 grey scale )  
Abrasion résistance (rubs) EN ISO 12947-2  
100.000 cycles Martindale

Reazione al fuoco - Flammability Italy Class 1 IM  
UNI 9175 Class 1 IM  
CRIB 5 ( BS 5852 )  
EN 1021 1&2 /  
CALIFORNIA TB 117  
B1 ( DIN 4102 )  
M1



TG12



TG21



TG15



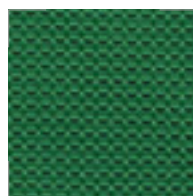
TG07



TG22



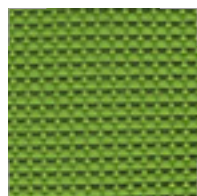
TG02



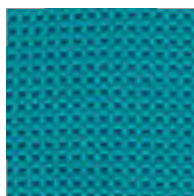
TG03



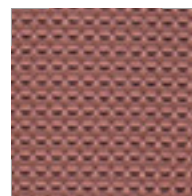
TG19



TG13



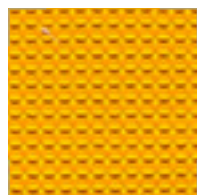
TG17



TG09



TG14



TG20



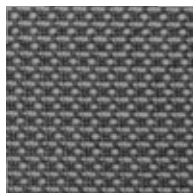
TG05

# MESH UP



Composizione - Composition  
100% Polyester  
Peso (g/ml) - Weight (g/lm) 490  
Fastness to rubbing ISO 105-X12 ( 4/5)

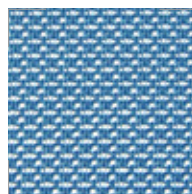
Abrasion résistance UNI EN ISO 5470-2  
100.000 cycles Martindale  
EN 1021 1-1  
UNI 1975:2010



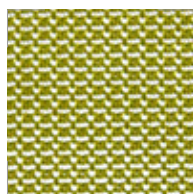
RP2



RP1



RP4



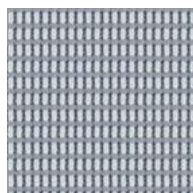
RP3

# ARIA

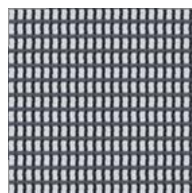


Composizione - Composition  
100% Polyester  
Peso (g/ml) - Weight (g/lm) 375  
Resistenza all'abrasione (cicli)  
Abrasion résistance (rubs)  
EN ISO 12947 : 2000

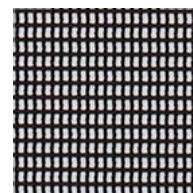
70.000 cycles Martindale  
Colour fastness to light (Xenotest)  
Blue scale UNI EN 105-B02 5  
Reazione al fuoco - Flammability  
BS 7176 Low Hazard using a CM Foam 35 Kg/cu.m.



RA26



RA02



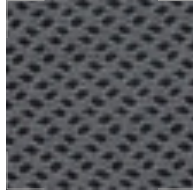
RA01

# MESH DIVA

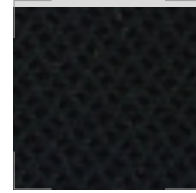


Composizione - Composition  
100% Polyester Fireretardant  
Peso (g/m) - Weight (g/m) 360  
Abrasion résistance UNI EN ISO 5470-2

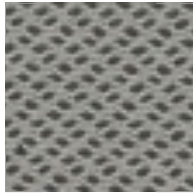
60.000 cycles Martindale  
Reazione al fuoco - Flammability Italy Class 1 IM  
UNI 9175 Class 1 IM  
CRIB 5 ( BS 5852 Part 1 )



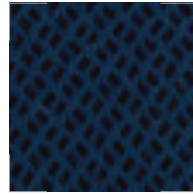
RD25



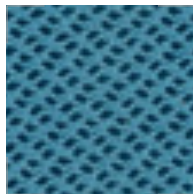
RD99



RD11



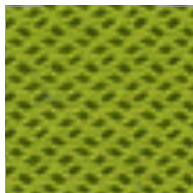
RD23



RD63



RD10



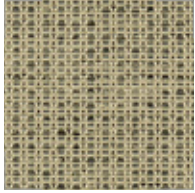
RD56

GIN

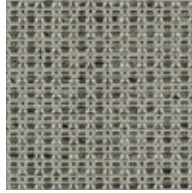


Composizione - Composition  
99% post-consumer recycled polyester /  
1% polyester  
Peso (g/m<sup>2</sup>) – Weight (g/m<sup>2</sup>) 365  
Abrasion résistance UNI EN ISO 12947-2

100.000 cycles Martindale  
Reazione al fuoco - Flammability  
BS EN 1021-1 Cigarette  
BS EN 10211&2 Cigarette and Match  
CA TB 117-2013



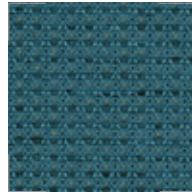
G179



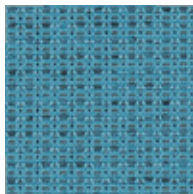
G123



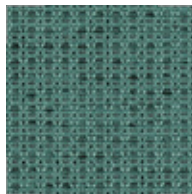
G199



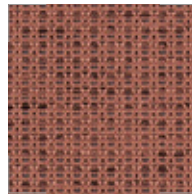
G186



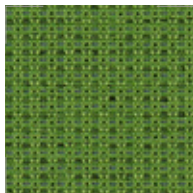
G183



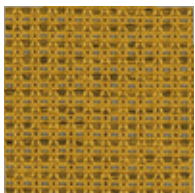
G190



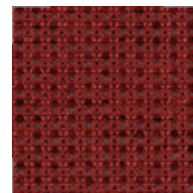
G110



G107



G157



G109

#### Note sui rivestimenti

Per ragioni tecniche non è possibile garantire lo stesso tono di colore tra un lotto di produzione ed un altro. Leggere differenze, con una tolleranza del  $\pm 10\%$  devono intendersi come normali e non possono dar adito a reclami o alla risoluzione del contratto.

In caso di tessuto fornito dal Cliente, REXSITT consiglia di richiedere preventivamente all'Ufficio Commerciale la conferma del metraggio necessario, in relazione al tipo di tessuto che si intende utilizzare; REXSITT si riserva il diritto di accettare o meno la produzione dei propri prodotti con il tessuto fornito, dopo analisi tecnica e di fattibilità. Le spese di trasporto per un eventuale reso del tessuto non utilizzabile restano a carico del Cliente. I costi dei prodotti da realizzare con materiale fornito dal Cliente vanno preventivamente richiesti esclusivamente al Servizio Clienti.

REXSITT srl non estende la sua abituale garanzia sui prodotti realizzati con pelli, tessuti o materiali forniti dal Cliente. REXSITT srl si riserva il diritto di apportare modifiche alle finiture contenute nella presente cartella senza preavviso alcuno.

#### Note on upholstery

For technical reasons, batch to batch variations in shade may occur. Slight differences, within a tolerance of  $\pm 10\%$ , are to be considered as normal and acceptable and they cannot give rise to claims or to a breach of contract.

In case of fabric supplied by the Customer, REXSITT suggests to previously ask to the Customer Service the confirmation of the fabric needed. REXSITT reserves the right to accept or reject to produce the chairs in customer's own fabric after making a technical analysis to establish the feasibility. The transport cost for returning the unused fabric will be at Customer's charge.

The costs for manufacturing the chairs in Customer's own material have to be previously requested to our Customer's service

REXSITT srl does not extend its regular guarantee to those products produced with leather, fabrics or materials supplied by the Customer. REXSITT srl reserves the right to make modifications to the finishes contained in the present folder without any prior communication.

#### Remarques sur les revêtements

Pour des raisons techniques, il n'est pas possible de garantir la même tonalité de couleur d'un lot de production à l'autre. De légères différences dans une tolérance de  $\pm 10\%$  doivent être considérées comme normales et ne doivent pas donner lieu à des réclamations ou à la résiliation du contrat. Dans le cas de tissus fournis par le client, REXSITT recommande de demander à l'avance au bureau de vente de confirmer le métrage nécessaire. REXSITT se réserve le droit d'accepter ou non la fabrication de ses produits avec le tissu fourni, après analyse sur la faisabilité. Les frais de transport pour le retour des tissus non utilisés sont à la charge du client. Les frais de transport pour le possible retour du tissu non utilisé sont à la charge du client. Les coûts des produits à fabriquer avec du matériel fourni par le client doivent être demandés à l'avance au service clientèle. REXSITT srl n'étend pas sa garantie habituelle sur les produits fabriqués avec les revêtements fournis par le client. REXSITT srl se réserve le droit d'apporter des modifications aux finitions contenues dans le présent nuancier sans préavis.

I colori dei campioni sono solo indicativi, leggeri scostamenti non verranno accettati come reclamo. The colors of the samples are only estimates, slight differences will not be accepted as a complaint. Les couleurs des échantillons ne sont qu'indicatives, de légères différences ne seront pas acceptées comme des réclamations.

**REXSITT ITALIA SRL**

sales@rexsitt.com

**GOLLINUCCI DANIELE**

gollinuccidaniele.com