

Finishing folder

2024

Fabric



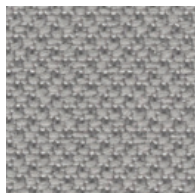
Gollinucci
Daniele

REXSITT

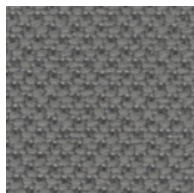


Composizione - Composition
100% Polyester
Peso (g/m²) - Weight (g/m²) 400
Abrasion résistance (rubs)
100.000 cycles Martindale
Solidità colori alla luce
Colour fastness to light (Xenotest)

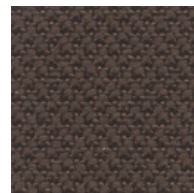
Blue scale UNI EN 105-B02 4
Reazione al fuoco - Flammability
UNI 9175 Class 1 IM
NF 92501-7 Class M1 with treatment if request
EN 1021-1 & 2 - BS Crib 5
BS 7176 Class Medium Hazard California TB117



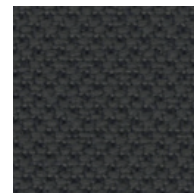
AL78



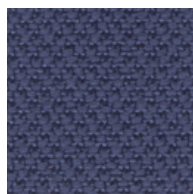
AL03



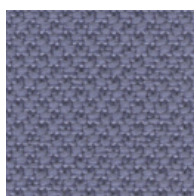
AL36



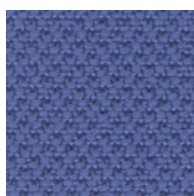
AL33



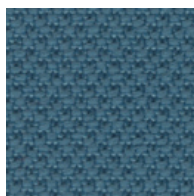
AL80



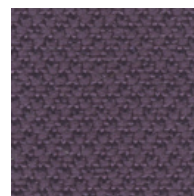
AL60



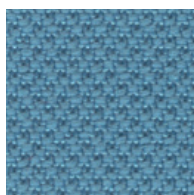
AL71



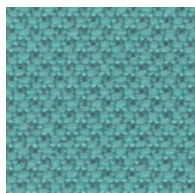
AL31



AL04



AL07



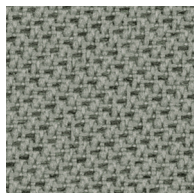
AL26

TONIC CAT. 2

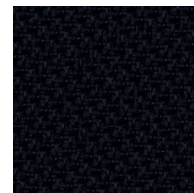


Composizione - Composition
99% post-consumer recycled polyester /
1% polyester
Peso (g/ml) - Weight (g/lm) 315
Light fastness ISO 105-B02 6-8
Abrasion résistance (rubs)
EN ISO 12947-2 100.000 cycles Martindale

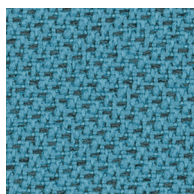
Reazione al fuoco - Flammability
CA TB 117-2013
ASTM E 84 Class 1
BS EN 1021 1&2 Cigarette and Match
BS EN 1021-1 Cigarette
BS 476 Part 7 class 1
DIN EN 13501-1 B-s1,d0(glued)



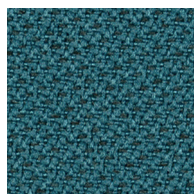
TO23



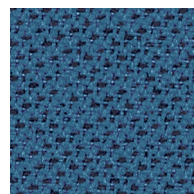
TO99



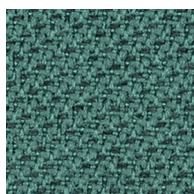
TO83



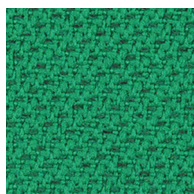
TO86



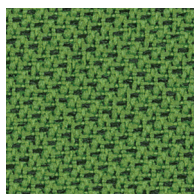
TO82



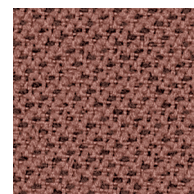
TO90



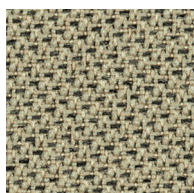
TO05



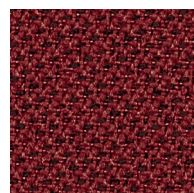
TO07



TO10



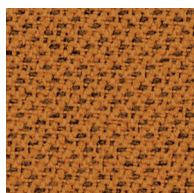
TO79



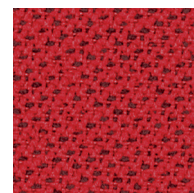
TO09



TO57



TO98



TO08

ON THE WAY CAT. 2

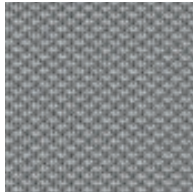


Composizione - Composition
100% Polyester Recycled
Peso (g/m) - Weight (g/m) 525
Light fastness ISO 105-B02
Blue scale UNI EN 105-B02 5-7
Abrasion resistance (rubs) EN ISO 12947-2
100.000 cycles Martindale

Reazione al fuoco - Flammability Italy Class 11M
UNI 9175 Class 1 IM
CRIB 5 (BS 5852 part II)
EN 1021 1&2 /
CALIFORNIA TB 117
BS 7176



ON16



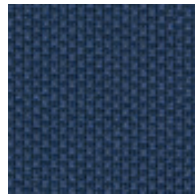
ON32



ON17



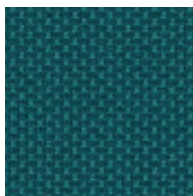
ON33



ON60



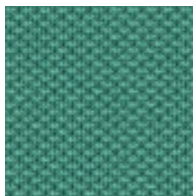
ON19



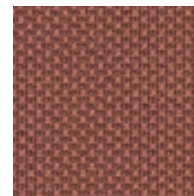
ON73



ON53



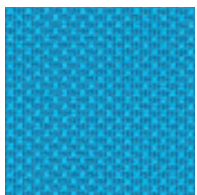
ON76



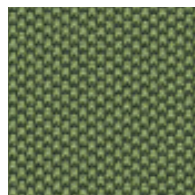
ON37



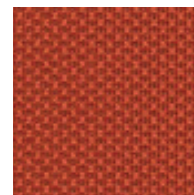
ON41



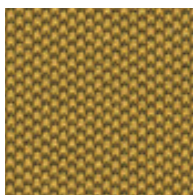
ON61



ON21



ON46



ON30



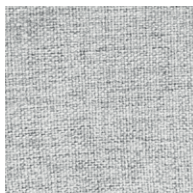
ON28

MATERIA CAT. 2

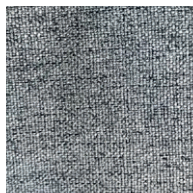


Composizione - Composition
100% polyester
Peso (g/m) - Weight (g/lm) 434
Light fastness ISO 105-B02 / : 4
Fastness to rubbing ISO 105-X12 (4/4 grey scale)
Abrasion résistance (rubs) EN ISO 12947-2

100.000 cycles Martindale
Reazione al fuoco-Flammability
CRIB 5 (BS 5852 Part 1)
EN 1021 1-1
CALIFORNIA TB 117
NFPA 260



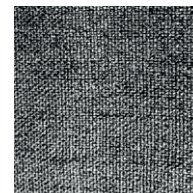
MTA07



MTA09



MTA12



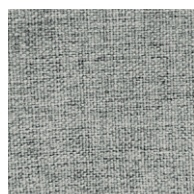
MTA10



MTA03



MTA04



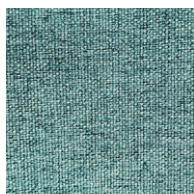
MTA08



MTA02



MTA05



MTA11



MTA01



MTA16



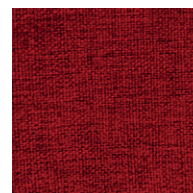
MTA13



MTA06



MTA15



MTA14

KATRINE CAT. 3



Composizione - Composition
100% Polyester Trade Mark Trevira CS
Peso (g/ml) – Weight (g/lm) 390
Light fastness ISO 105-B02
Blue scale UNI EN 105-B02 5-7
Abrasion résistance (rubs) EN ISO 12947-2
80.000 cycles Martindale
Acoustic performances ISO 354
(Reverberation Room)

Reazione al fuoco–Flammability Italy Class 11M
UNI 9175 Class 1 IM
CRIB 5 (BS 5852 part II)
EN 10211&2 /
CALIFORNIA TB 117
BS 7176
B1 (DIN 4102)



KAT25



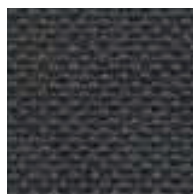
KAT07



KAT08



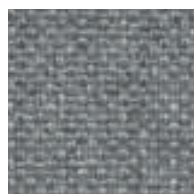
KAT33



KAT11



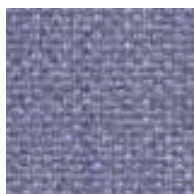
KAT03



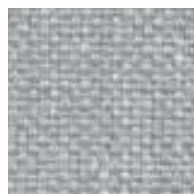
KAT06



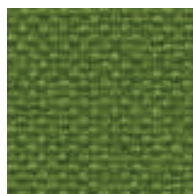
KAT22



KAT20



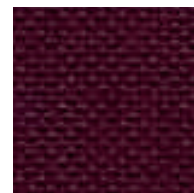
KAT32



KAT19



KAT91



KAT29



KAT30



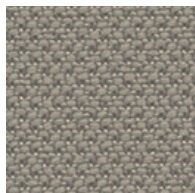
KAT82

ALBA CAT. 1



Composizione - Composition
100% Polyester
Peso (g/m) - Weight (g/lm) 400
Abrasion résistance (rubs)
100.000 cycles Martindale
Solidità colori alla luce
Colour fastness to light (Xenotest)

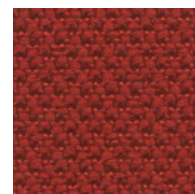
Blue scale UNI EN 105-B02 4
Reazione al fuoco - Flammability
UNI 9175 Class 1 IM
NF 92501-7 Class M1 with treatment if request
EN 1021-1 & 2 - BS Crib 5
BS 7176 Class Medium Hazard California TB117



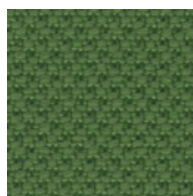
AL20



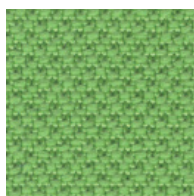
AL06



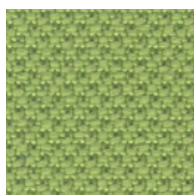
AL40



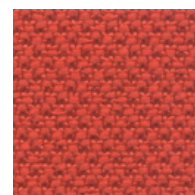
AL29



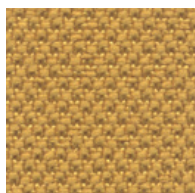
AL13



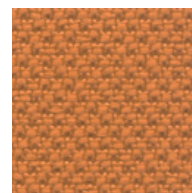
AL11



AL27



AL05



AL30

Note sui rivestimenti

Per ragioni tecniche non è possibile garantire lo stesso tono di colore tra un lotto di produzione ed un altro. Leggere differenze, con una tolleranza del $\pm 10\%$ devono intendersi come normali e non possono dar adito a reclami o alla risoluzione del contratto.

In caso di tessuto fornito dal Cliente, REXSITT consiglia di richiedere preventivamente all'Ufficio Commerciale la conferma del metraggio necessario, in relazione al tipo di tessuto che si intende utilizzare; REXSITT si riserva il diritto di accettare o meno la produzione dei propri prodotti con il tessuto fornito, dopo analisi tecnica e di fattibilità. Le spese di trasporto per un eventuale reso del tessuto non utilizzabile restano a carico del Cliente. I costi dei prodotti da realizzare con materiale fornito dal Cliente vanno preventivamente richiesti esclusivamente al Servizio Clienti.

REXSITT srl non estende la sua abituale garanzia sui prodotti realizzati con pelli, tessuti o materiali forniti dal Cliente. REXSITT srl si riserva il diritto di apportare modifiche alle finiture contenute nella presente cartella senza preavviso alcuno.

Note on upholstery

For technical reasons, batch to batch variations in shade may occur. Slight differences, within a tolerance of $\pm 10\%$, are to be considered as normal and acceptable and they cannot give rise to claims or to a breach of contract.

In case of fabric supplied by the Customer, REXSITT suggests to previously ask to the Customer Service the confirmation of the fabric needed. REXSITT reserves the right to accept or reject to produce the chairs in customer's own fabric after making a technical analysis to establish the feasibility. The transport cost for returning the unused fabric will be at Customer's charge.

The costs for manufacturing the chairs in Customer's own material have to be previously requested to our Customer's service

REXSITT srl does not extend its regular guarantee to those products produced with leather, fabrics or materials supplied by the Customer. REXSITT srl reserves the right to make modifications to the finishes contained in the present folder without any prior communication.

Remarques sur les revêtements

Pour des raisons techniques, il n'est pas possible de garantir la même tonalité de couleur d'un lot de production à l'autre. De légères différences dans une tolérance de $\pm 10\%$ doivent être considérées comme normales et ne doivent pas donner lieu à des réclamations ou à la résiliation du contrat. Dans le cas de tissus fournis par le client, REXSITT recommande de demander à l'avance au bureau de vente de confirmer le métrage nécessaire. REXSITT se réserve le droit d'accepter ou non la fabrication de ses produits avec le tissu fourni, après analyse sur la faisabilité. Les frais de transport pour le retour des tissus non utilisés sont à la charge du client. Les frais de transport pour le possible retour du tissu non utilisé sont à la charge du client. Les coûts des produits à fabriquer avec du matériel fourni par le client doivent être demandés à l'avance au service clientèle. REXSITT srl n'étend pas sa garantie habituelle sur les produits fabriqués avec les revêtements fournis par le client. REXSITT srl se réserve le droit d'apporter des modifications aux finitions contenues dans le présent nuancier sans préavis.

I colori dei campioni sono solo indicativi, leggeri scostamenti non verranno accettati come reclamo.

The colors of the samples are only estimates, slight differences will not be accepted as a complaint.

Les couleurs des échantillons ne sont qu'indicatives, de légères différences ne seront pas acceptées comme des réclamations.

REXSITT ITALIA SRL

sales@rexsitt.com

GOLLINUCCI DANIELE

gollinuccidaniele.com